

CIMON

THE FUTURE OF AUTOMATION

PRODUCT GUIDE

Ultimate Access / SCADA Software

PLC / Programmable Logic Controller

Xpanel / HMI (Human Machine Interface)

Hybrid Xpanel / HMI + PLC

IPC / Industrial Panel Computer

IAC / Industrial Rack Type Computer



Total Solution for Industrial Automation

CIMON Ltd. is a world-class producer of industrial automation and process control devices. Established in 1999, CIMON Ltd. is headquartered in Seoul, South Korea with numerous offices, R&D centers, as well as its wholly owned U.S. subsidiary, CIMON, inc., located in Las Vegas, Nevada.

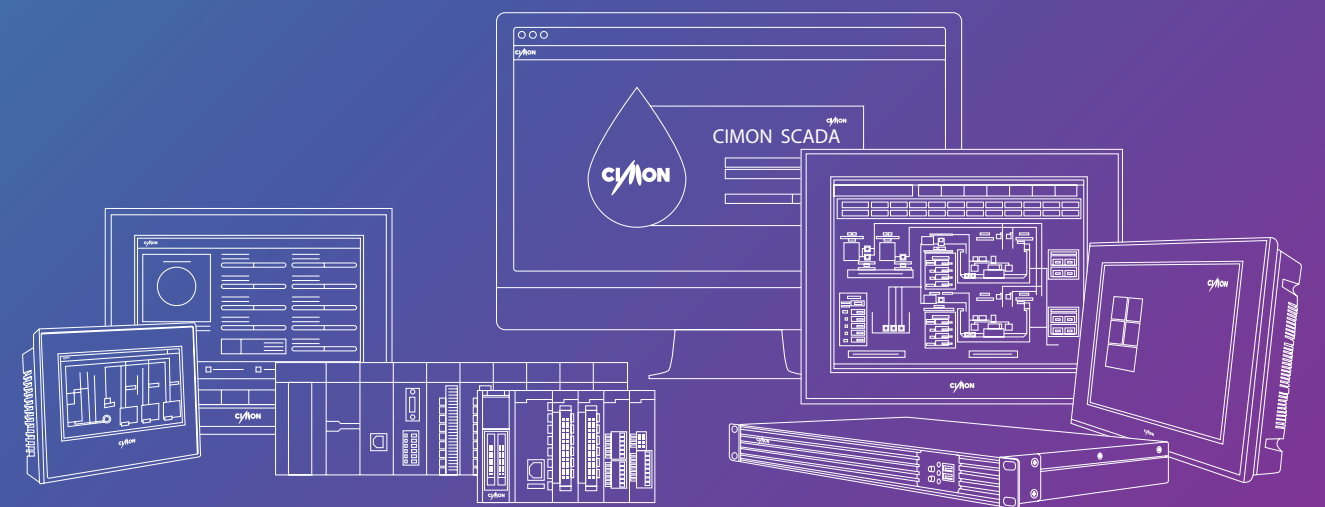
We take pride that CIMON can develop and manufacture both industrial hardware and software with a high degree of engineering sophistication. Our product line-up can satisfy any application that customers demand using CIMON's robust and reliable industrial automation products.

CIMON provides a wide range of industrial automation products including PLC, HMI, SCADA software and industrial PCs. CIMON's complete product portfolio gives customers everything they need to build and maintain a system efficiently and effectively. The company has been providing automation solutions for industries including automotive, power plants, semi-conductors, water/wastewater, electronics, oil and gas, building automation and more.

CIMON has the dominant market position in South Korea for PLC, HMI, SCADA, industrial PCs and has a large client-base around the world. Our SCADA is the Korean market leader with more than 37,000 CIMON SCADA licenses already in use worldwide. Major customers include Samsung, LG, Kia motors, Hyundai, Hankook tires, and Honeywell Korea.

CIMON is also one of the pioneers in the smart factory sector with innovative automation products. CIMON products are ready for industry 4.0, the next industrial revolution.

Our company is driven by innovation and technology. Our worldwide team of experts with commitment, dedication and innovative spirit, will continue to provide exceptional service and products for the automation industry. Start your smart future with CIMON's total solution.



CIMON Product Line-Up

Ultimate Access | SCADA Software

Cap Redundancy · DS/RS · MOBILE · WEB

PLC | Programmable Logic Controller

PLC-XP · PLC-CP · PLC-S · CIMON Software

Xpanel | HMI (Human Machine Interface)

4.3", 7", 10.4", 12.1", 15" Display HMIs · Xpanel-Designer Software

Hybrid Xpanel | HMI + PLC

7" Display HMI + PLC-S

IPC | Industrial Panel Computer

10.4", 12.1", 15", 19" Display Industrial PCs

IAC | Industrial Rack Type Computer

NU1RP-A

Ultimate Access

SCADA Software

CIMON Ultimate Access SCADA is a Windows based software, perfect for a wide variety of industries. Our SCADA allows users to monitor and control the system at any time, from anywhere.



CIMON PLC

Programmable Logic Controller

CIMON PLC is an industrial control device based on the international standards IEC61131, which is appropriate for industrial sites that require high reliability and performance. CIMON PLC is optimized for industry 4.0 and ready to be implemented in smart factory solutions.



CIMON Xpanel

HMI (Human Machine Interface)

CIMON Xpanel is an HMI unit, proven to be a faultless solution for harsh industrial sites. Our easy-to-use project design tool combined with reliable HMI hardware makes Xpanel suitable for every application.



CIMON Hybrid Xpanel

HMI + PLC

CIMON Hybrid Xpanel is an all-in-one unit containing both PLC and HMI. The Hybrid Xpanel, paired with user-friendly design environment, is an ideal solution to get maximum benefits from reliable and powerful CIMON products.



CIMON IPC

Industrial PC

CIMON IPC is an industrial panel PC with powerful hardware performance. Our IPCs are proven to be reliable in harsh industrial environments through years of field use in various applications.



CIMON IAC

Industrial Rack Type Computer

CIMON IAC is a rack type industrial computer. It has a fan-less design that is resistant to dust, and is equipped with a highly reliable mainboard that is manufactured by CIMON.



CIMON SCADA

SUPERVISORY CONTROL AND DATA ACQUISITION

ULTIMATE ACCESS

REDUNDANCY | DS/RS | MOBILE | WEB



Library

Intuitive graphic design with advanced images and animation library



Network

Easy to develop network with more than 500 communication drivers



ODBC

Supports ODBC to connect universal database systems



Redundancy and Server-Client System

Stable system operation with redundancy and server-client system

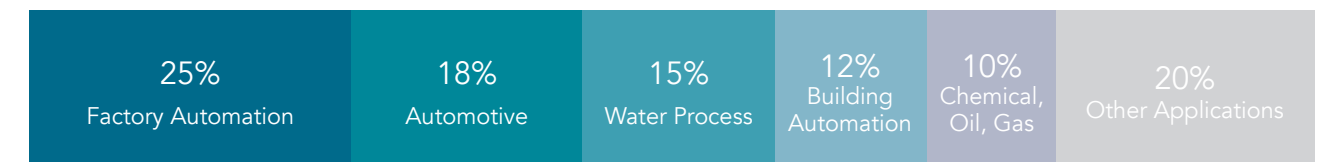


CIMON Ultimate Access is a Windows based SCADA software for monitoring and controlling industrial automation systems.



- Real time and historical data can be monitored and logged
- Trend feature can display streamed data
- Various types of alarm can be used to notify and record abnormal activities
- Reports can be created and exported in Excel format
- Security levels can be defined to regulate user access
- Embedded VB script module gives users full ability to create customized functions
- OPC Server/Client is supported
- Automation system can be controlled and monitored through web or mobile devices
- OLE Automation enables monitoring and data link with other programs
- FDA CFR21 part 11 requirements are fully met

CIMON-SCADA in Market



REDUNDANCY SYSTEM

Highly reliable monitoring and control system

FEP COMMUNICATION

SCADA to SCADA high speed data communication system

WEB / MOBILE SERVER

Remotely monitor and control using the internet

OPC SERVER / CLIENT

Supports standard OPC server/client

CIMON PLC

PROGRAMMABLE LOGIC CONTROLLER

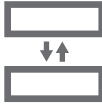


PLC-XP | PLC-CP | PLC-S | CICON SOFTWARE



Various Lineup

PLC lineup covers large plants to simple machine control



Redundancy

CPU, Power, and network redundancy offered



Expansion

Easy expansion using ethernet connection



Positioning

Motion control by EtherCat communication supported



CIMON offers the most reliable and cost-effective controllers for a wide range of automation systems. CIMON PLC lineup is comprised of the XP Series, CP Series, and PLC-S Series to accommodate a vast variety of applications.



- **Communication**
Support for Serial, Ethernet, CDMA, Fieldbus, BACnet, EthernetIP, OPC UA, and more.
- **Powerful Hardware**
High-performance CPU built-in.
- **Base Expansion**
Scalability through base expansion.
- **User-friendly Programming Software**
Intuitive UI and versatile instruction library allows programmers to work efficiently and productively.
- **Redundancy**
Achieve higher reliability through CPU, Power, and Network Redundancy.



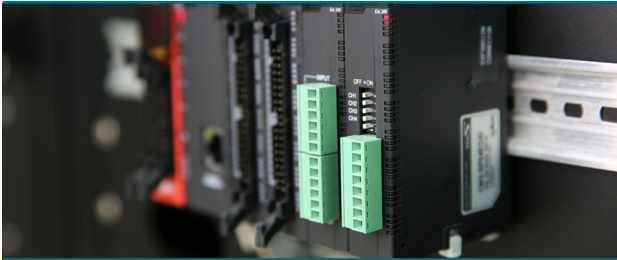
XP Series

Best for large-scale applications that require powerful performance and uncompromising reliability.



CP Series

Ideal for medium-scale applications. Offers specialized modules for user customization.



PLC-S Series

Compact PLCs that are the most cost-effective for small to medium size systems.

CIMON Xpanel

HMI (HUMAN MACHINE INTERFACE)



4.3", 7", 10.4", 12.1", 15" Display HMIs | Xpanel-Designer



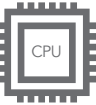
Line-up
4.3" to 15" models available



Front Bezel Aluminum Die-casting
Maximizing equipment durability
(10.4" and larger)



High Speed CPU
Fast data processing with high performance CPU



Design Program Xpanel Designer
User friendly interface for project creation



CIMON-Xpanel takes your HMI experience to the next level.
Our products offer proven reliability for any industrial environment and intuitive designing software for rapid project development.

- Schedule**
Specific tasks can be triggered based on date and time
- Security**
Protects the system by regulating user access (up to 10 levels)
- Alarm**
Alarm can be used to alert and record abnormal activities
- Recipe**
Pre-defined parameters offer convenience to switch among different processes
- Extensive Library**
More than 20,000 graphic objects are included
- Data Bridge**
Xpanel can act as an intermediate node between two devices
- Script**
C style script module provides the capability of creating customized functions
- VNC**
Xpanel can be remotely controlled through VNC app

High Performance

- High-speed and efficient CPU
- High quality LCD Display
- Powerful and versatile communication

High Reliability

- CE/KC/UL/FCC/IP65 Certified
- Front bezel aluminum die casting (10.4" and larger models)

Animation

- GIF support
- Custom GIF with animation editor
- Animation simulation with editor
- Add custom animations to the library

Flexible Network Support

- 1 Ethernet Port, Maximum 2 Serial Ports, 1 USB Host Port
Simultaneous communication up to 3 devices (RS232C, RS422/485, Ethernet)
- Multidrop (RS422C/485, Ethernet)
- Provides more than 200 communication drivers

Project Simulator

- Easy to analyze with project simulation
- User can test the completed project before deploying it in the field

Easy Upgrade

- OS upgrade through Ethernet port
- Runtime upgrade possible with Xpanel Designer

Intuitive Design Tool (Xpanel Designer)

- More than 20,000 graphic library objects
- User-friendly interface for easy development and integration

Data Logging

- Data can be stored in local memory or external USB/SD drives
- Logged data can be displayed as a trend

CIMON Hybrid Xpanel



The most advanced micro PLC integrates seamlessly with a high quality LCD display.

7" display with built-in PLC-S



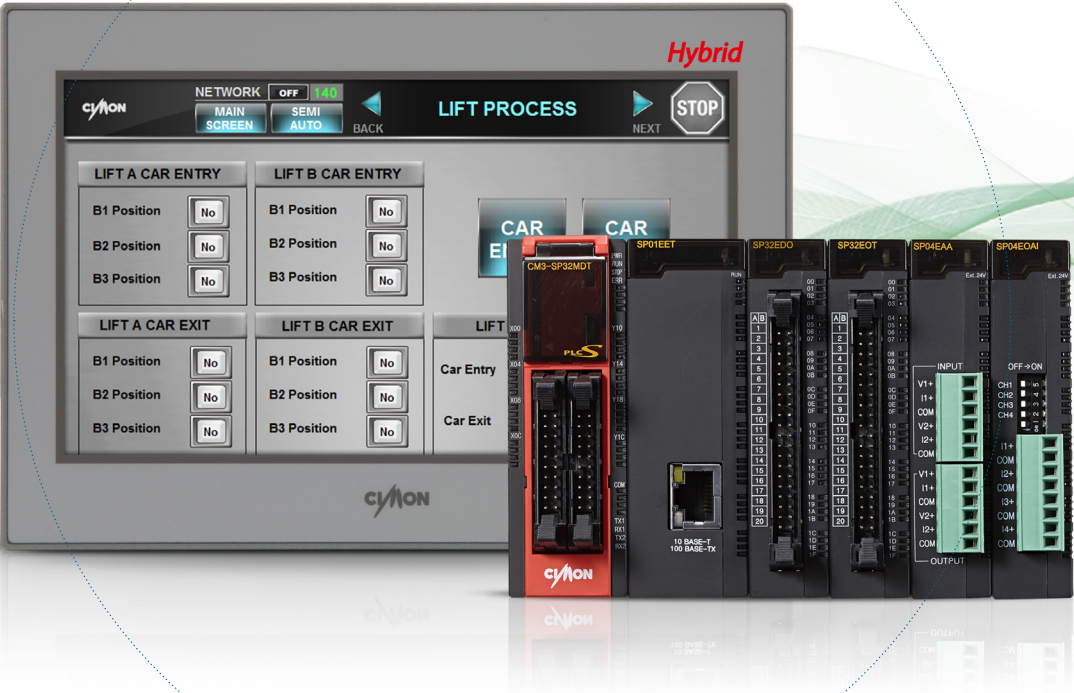
High Quality

LED display-Low power, low heat, full brightness and vivid color display



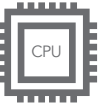
Easy Module Expansion

Up to 2 modules can be added



High Speed CPU

Fast data processing with high performance CPU



Design Program Xpanel Designer

User friendly interface for project creation



VESA Wall Mount Support

The device is equipped with a 100 x 100 mm square hole pattern.

PLC Module Expansion

Hybrid Xpanel has PLC-S CPU built in.

All of the PLC-S modules are compatible.

(Maximum of 2 PLC-S modules can be added)

High Reliability

Hybrid Xpanel has the reliability of Xpanel HMI and PLC-S combined, offering maximized reliability for all industries.

- Surge Tolerance: above 3kV
- EFT/B Tolerance: above 3kV
- Impulse Noise Tolerance: above 3kV
- Other test criteria such as temperature and vibration meet CIMON PLC standards.



Detachable PLC Terminal Block

USB Hub allows the users to use Xpanel Designer (HMI designing software) and CICON (PLC programming software) simultaneously.

True PLC Integration

Unlike other products that simply have I/Os in an HMI, in the Hybrid Xpanel, a real PLC is integrated. This means that the HMI and PLC have separate PCB boards, leading to much higher reliability. On top of this, all of the advanced features of PLC-S are provided.

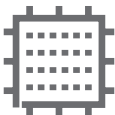
CIMON IPC

INDUSTRIAL PANEL COMPUTER

10.4", 12.1", 15", 19" Display Panel PC



Low Power and Low Heat System
Low power consumption (16W for iNT211-A/D)



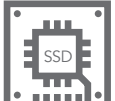
Intel Quad-Core Processor
High performance CPU



Various I/O Ports
2 Ethernet ports / 4 Serial ports



SSD Installed
SSD Storage Installed



CIMON IPC is an industrial PC with strong performance and reliability in various industrial applications.

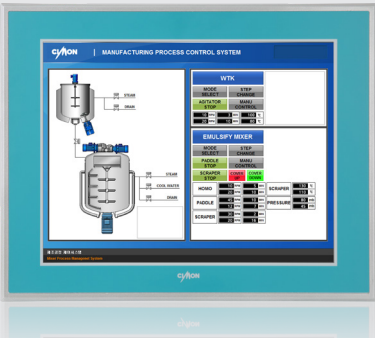


- UWF/EWF program for the protection of the OS
- High resolution display and polished design
- Provides Ethernet, Serial (RS232C / 422 / 485), USB Ports for easy connection with other systems
- Durability and stability with SSD storage
- High performance Quad Core CPU embedded
- DC24V power
- Microsoft Windows OS installed
- Reliable fanless design
- J1900/i5 CPU available



CIMON - ULTIMATE

- Panel PC with Ultimate Access SCADA installed
- Combination of HMI and PC to reduce cost
- Easy project editing and operation
- Fanless PC with Touch Panel
- Quad Core CPU and SSD installed
- Microsoft Windows OS installed
- 4GB RAM installed (max. 8GB)
- Windows 10 or 7 options available



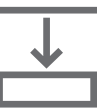
CIMON - Panel PC

- Industrial Panel PC for automation systems
- Microsoft Windows OS installed
- Proven to be optimal for harsh industrial applications

CIMON IAC

INDUSTRIAL RACK TYPE COMPUTER

NU1RP-A



Slim Size
1U Rack size



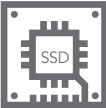
Equipment Longevity
Fanless CPU and system



Equipment Stability
EWF function for data protection
and easy recovery system



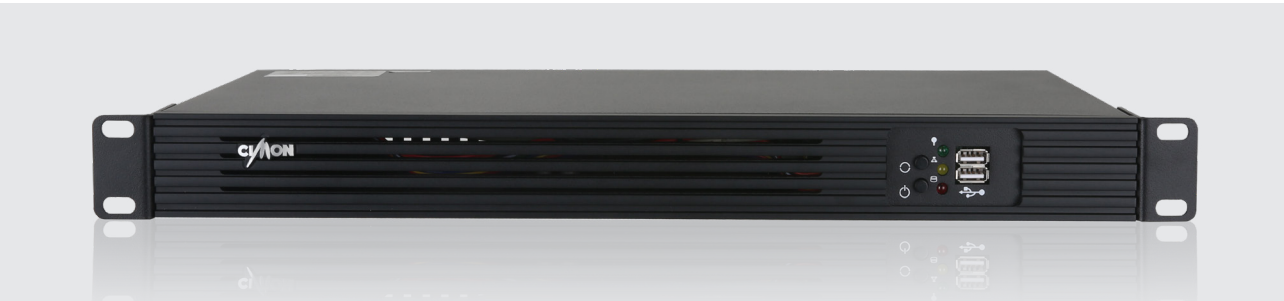
SSD Storage Installed
Fast booting and minimize data loss



CIMON-IAC is a rack type industrial PC specialized for industrial automation.



- 1U size Rack Mount Computer
- Fanless Solution
- CIMON Power Solution for industrial applications
- SSD storage used for fast booting and minimized data loss
- DC24V Power
- Microsoft Windows OS installed



NU1RP-A

NU1RP-A offers system stability and longevity through fanless design. Our industrial PCs are designed for harsh and dusty industrial sites, and its low energy consumption (13W) design is also ideal for areas where minimizing power consumption is essential.

We built the PCs from the ground up by designing and manufacturing our own internal hardware to meet the industrial standards. NU1R is perfect for all kinds of application in every industry.

CIMON Global Network



- NORTH AMERICA

 - USA
 - CANADA
- SOUTH AMERICA

 - BRAZIL
 - MEXICO
 - PERU
 - BOLIVIA
 - COLOMBIA
 - CHILE
 - PORTUGAL
- ASIA

 - THAILAND
 - CHINA
 - MALAYSIA
 - INDONESIA
 - SRI LANKA
 - TAIWAN
 - INDIA
- OCEANIA

 - PAKISTAN
 - PHILIPPINES
 - BANGLADESH
 - VIETNAM
 - AUSTRALIA
- EUROPE

 - POLAND
 - GERMANY
 - HUNGARY
 - BULGARIA
 - DENMARK
 - RUSSIA
- MIDDLE EAST

 - SERBIA
 - LITHUANIA
 - CZECH
 - UKRAINE
 - GREECE
 - BOSNIA
- AFRICA

 - ISRAEL
 - IRAN
 - TURKEY
 - NIGERIA

CIMON Customers

SAMSUNG	SAMSUNG SDI	SAMSUNG ELECTRO-MECHANICS	SAMSUNG BIOLOGICS
LG Chem	LG Household & Health Care	LG Hausys	LG Display
HYUNDAI	KIA The Power to Surprise	RENAULT-SAMSUNG	GENERAL MOTORS
SSANGYONG MOTOR	Hankook	SK chemicals	SK hynix
kt	Amkor Technology	posco	HYUNDAI HEAVY INDUSTRIES
Mando Halla Company	KBS Korean Broadcasting System	AMOREPACIFIC CORPORATION	Incheon Airport
KAC	KAI KOREA AEROSPACE INDUSTRIES, LTD.	KORAIL	Seoul Metro
KOREA UNIVERSITY	KGU	Korea National University of Science and Technology	Hanyang University
USW	Korea National University of Education	Korea National University of Science and Technology	eVOQUA
AKEBONO	KOREAN AIR	durex	SHARP



www.cimon.com

Revision / Ver. 3 Revision Date / SEPT 2019 Printed SEPT 2019

U S A CIMON Inc. 2538 Anthem Village Dr. #110, Henderson, NV 89052

Tel. +1-702-820-1060

Seoul Office 11th Floor, M State, #114, Beobwon-ro, Songpa-gu, Seoul, Republic of Korea, 05854

Tel. +82-2-480-8601

HQ Office #48, Beolmal-ro, Bundang-gu, Seongnam-si, Gyeonggi-do, Republic of Korea, 13503

Email. info@cimon.com
